



 **MAGICK
HOME**

WHERE DESIGN MEETS DELIGHT

THE MAGICKHOME STANDARD

At MagickHome, we do more than make cabinets—
we create the home of your dreams.



QUICK QUOTE

Our online Digital Designer tool makes it fast and fun to visualize your new kitchen and get a quote!



FREE DESIGN

Fill out the form on our website and receive a full expert room design within 48 hours!



INCREDIBLE VALUE

The selection and quality we offer is rare to find at this price point.



EXCEPTIONAL SERVICE

You're in good hands with our friendly team. We know cabinets, inside and out.



QUICK SHIP

We'll ship out within just 3 weeks—faster than the industry standard.



LIMITED LIFETIME WARRANTY

Rest assured knowing every product is covered under our extensive warranty.

SUPERIOR CONSTRUCTION

THE DIFFERENCE IS IN THE DETAILS



1 5/8-inch side gables for superior strength & durability.

2 Sleek slimline metal or solid wood dovetail drawer boxes with full-extension undermount glides hold up to 75 lbs.

3 Water- and stain-resistant melamine interior cabinet boxes.

4 3/4-inch full-depth shelves for heavier storage capacity.

5 Designer linen pattern interior.

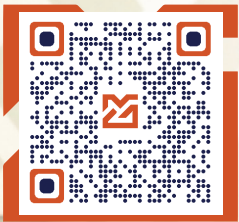
6 Frameless full-access construction eliminates the face frame around cabinets for a modern look & extra storage space.

7 Tool-free press-in hinges are easy to adjust.

8 Soft-close doors and drawers for quiet use.

9 Pre-installed adjustable legs provide easy levelling on uneven floors.

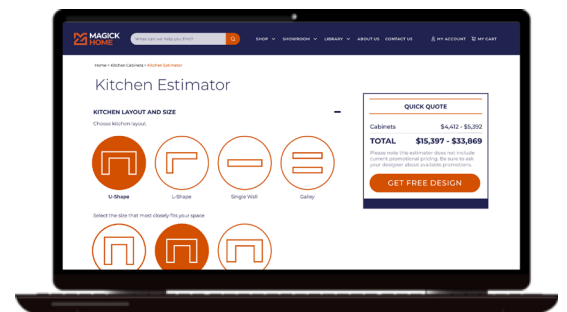
GET A QUOTE!



SCAN TO GET
A QUICK QUOTE



Ready to dive into planning your kitchen project? Use our Kitchen Estimator to receive an instant quote!



1 SELECT KITCHEN LAYOUT
Choose from U-Shape, L-Shape, Single Wall, or Galley.

2 SELECT SIZE
Select the size that fits your space (Small, Medium, Large).

3 SELECT A STYLE
Pick the style that suits you best: Modern, Contemporary, Transitional, or Traditional.

4 SELECT STORAGE SOLUTION PACKAGE
Choose the upgrades that suit your space and budget: Good, Better, or Best.

FREE EXPERT DESIGN

Experience the convenience of designing your ideal kitchen with our MagickHome team, right from the comfort of your own home. Book your free, no-obligation consultation today!

1 3D COLOR RENDERINGS

We provide 3D renderings in color as well as black and white for extra detail—so you can really dream about living in your new space.

If you're unsure about how to measure your space, don't worry! We're happy to cater to your needs and address any questions you may have.

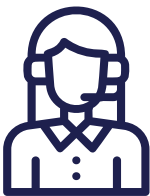
2 COMPLETE QUOTE PACKAGE

List and price breakdown of each item for full budget control. We will ensure no item is overlooked, even down to the finishing panels and fillers, with full product details.



3 INSTALLATION INSTRUCTIONS

The layout you receive will also act as the install instructions to put your room together--like a handy map!



PHONE

Call us at
888 860 1120



EMAIL

Email us at
support.us@magickhome.com



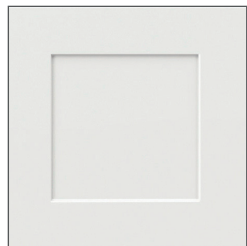
WEB

Scan to fill out
the form online at
magickhome.com

DOOR



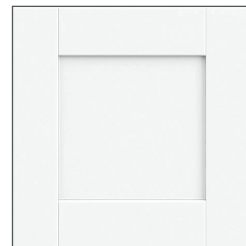
WILLOW



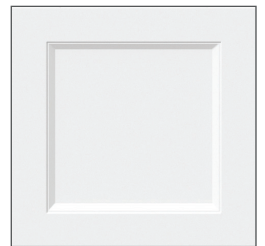
JASMINE



SEA HOLLY



DAHLIA



MAGNOLIA

STYLES



CAMELLIA



WISTERIA



LILY



CORDYLINE



SUMMERINA

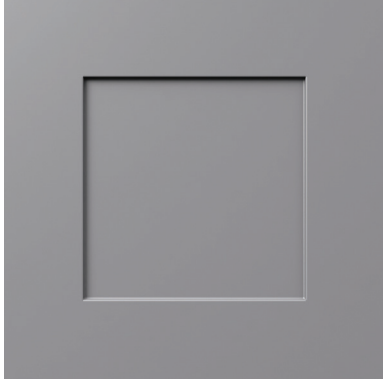
COLLECTIONS



Distinctively rich, this Slate Grey shaker effortlessly radiates a refined warmth and beauty.



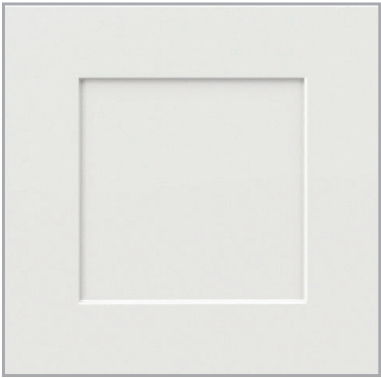
WILLOW



[VIEW ONLINE](#)



JASMINE



VIEW ONLINE



A forever classic, this creamy Warm White shaker creates an inviting, cozy space.





CORDYLINE



VIEW ONLINE



A rich, slab-style door brings an elevated minimalist look to your home.



SEA HOLLY



VIEW ONLINE





Soft and sophisticated, this Light Grey shaker offers an elegant style that will stand the test of time.



Always in style, our Bright White shaker is easy to contrast or coordinate for a fresh, bright space.



DAHLIA

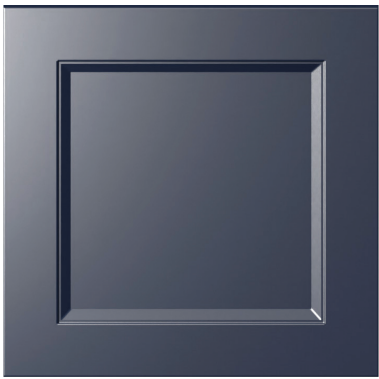


VIEW ONLINE





CAMELLIA



[VIEW ONLINE](#)



Versatile and unique, a navy door can add bold depth or a sense of serene calm.



A simple Bright White slab door is made for modern designs—plus, it coordinates perfectly with any accent color.



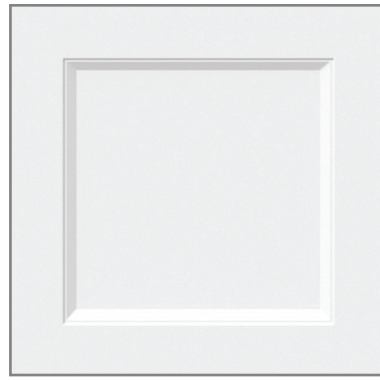
VIEW ONLINE





Classic and timeless, this Bright White recessed panel style looks clean on its own and matches perfectly with other neutrals or colors.

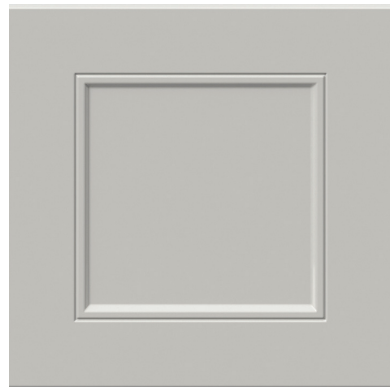
MAGNOLIA



VIEW ONLINE



WISTERIA



VIEW ONLINE



This neutral Light Grey door has a beaded inner panel, offering the perfect balance of simplicity and detail.





SUMMERINA



VIEW ONLINE





Rich and striking, our solid ash wood door adds a gorgeous, bold depth to any room.



CABINETRY FOR THE WHOLE HOME

It's easy to combine MagickHome cabinets to create functional and beautiful storage for your whole home: the mudroom, entertaining spaces, office, laundry room, bathroom, and more!



Sea Holly



Willow



YOUR KITCHEN PRIORITY SCALE

Assess your preferences to create your perfect kitchen.



STORAGE

Lots of cabinets for hiding everything away, plus clever internal features

Low Priority

High Priority



ENTERTAINING

Extra seating and space to make memories with family & friends

Low Priority

High Priority



BAKING & COOKING

Serious prep space and built-in dedicated baking areas

Low Priority

High Priority



WORKSPACE

A designated area to work from home, complete art projects, or do paperwork

Low Priority

High Priority



FAMILY-FRIENDLY

Considered kid zones and spaces for pets

Low Priority

High Priority



ELECTRONICS

Outlet-accessible counter space for chargers, tablets, & more

Low Priority

High Priority



YOUR CHECKLIST

What you need to do before you speak to one of our design specialists.

1



FIND YOUR STYLE

Gather inspiration from magazines, Pinterest, and your imagination. Figure out what you love—and what you don't.

2



TAKE PICTURES

Take as many photos of your current space as possible, including every angle and the full length of the room. (Don't worry, they don't need to be fancy.)

3



GET MEASUREMENTS

Measure your walls, ceilings, doorways, and openings. Use the QR code on this page to access our helpful measuring guide.

4



WORK OUT YOUR BUDGET

Figure out what you want to spend, noting any areas you'd be willing to splurge on—like your dream kitchen island. For a sense of what to expect, get a quick quote with our online Kitchen Estimator

5



ESTABLISH A TIMELINE

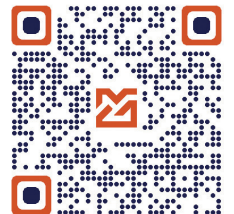
Consider when you'll be ready for renovations in your home. If you have a hard deadline, make note of that. For time-sensitive projects, we're proud to ship in just 3 weeks—plus, you'll receive your room design within 48 hours.

6



REACH OUT

Congrats! You're now ready to fill out our design request form and connect with our team. Scan the QR code on this page to begin.



CONTACT US

FREE EXPERT DESIGN

Experience the convenience of designing your ideal kitchen with our MagickHome team, right from the comfort of your own home. Book your free, no-obligation consultation today!



**SCAN FOR
FREE
EXPERT
DESIGN**



FOLLOW US ON INSTAGRAM

For more great inspiration,
tips, and future promos!

@MAGICKHOME_US



 888 860 1120

 support.us@magickhome.com

 magickhome.com

AVAILABLE NOW!

OUR CABINETS ARE REACHING NEW HEIGHTS!

Introducing our 40" H uppers & 94.5" H tall cabinets available in a wide range of widths! Plus, we now offer upgraded solid wood dovetail drawer boxes, made with a fully captivated plywood drawer bottom!



✓ **SOLID WOOD DOVETAIL DRAWERS**

✓ **GREATER DESIGNABILITY**

✓ **EXTRA HIGH CABINETS**



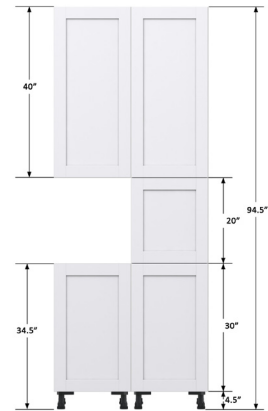
UPGRADED DRAWER BOX

Solid wood dovetail



STANDARD DRAWER BOX

Sleek slimline metal



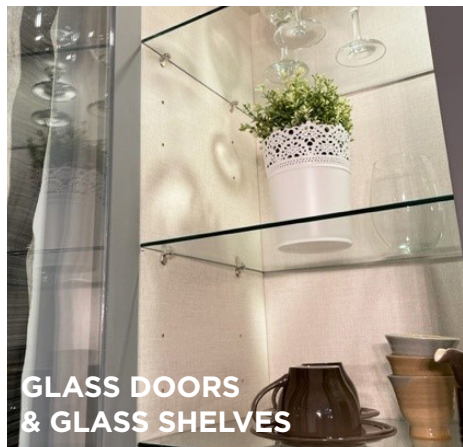
EXPANDED SIZE OFFERING

Available in a wide range of widths and all door styles



FINISHING TOUCHES

Add some extra beauty on the inside! Enhance your project with functional interior storage solutions that ensure your kitchen is both practical and visually appealing. Our selection of interior accessories maximizes space, creating the organized kitchen you've always wanted. Complete the look with stylish finishing touches like our color-matched panels, moldings, and trims.



GLASS DOORS & GLASS SHELVES



COVE CROWN MOLDINGS



PULL-OUT RECYCLING/TRASH BINS



LAZY SUSAN



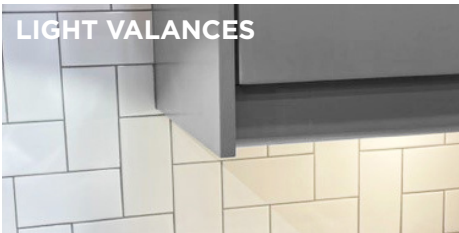
PREMIUM LAZY SUSAN



DESIGNER LINEN INTERIOR



HIDDEN DRAWERS / ROLL-OUT TRAYS



LIGHT VALANCES



CUTLERY TRAYS



LEMANS PREMIUM CORNER PULL-OUT



COVER PANELS



UNDER SINK MAT



SPICE RACK PULL-OUT



HIDDEN DRAWERS



MAGIC CORNER PULL-OUT



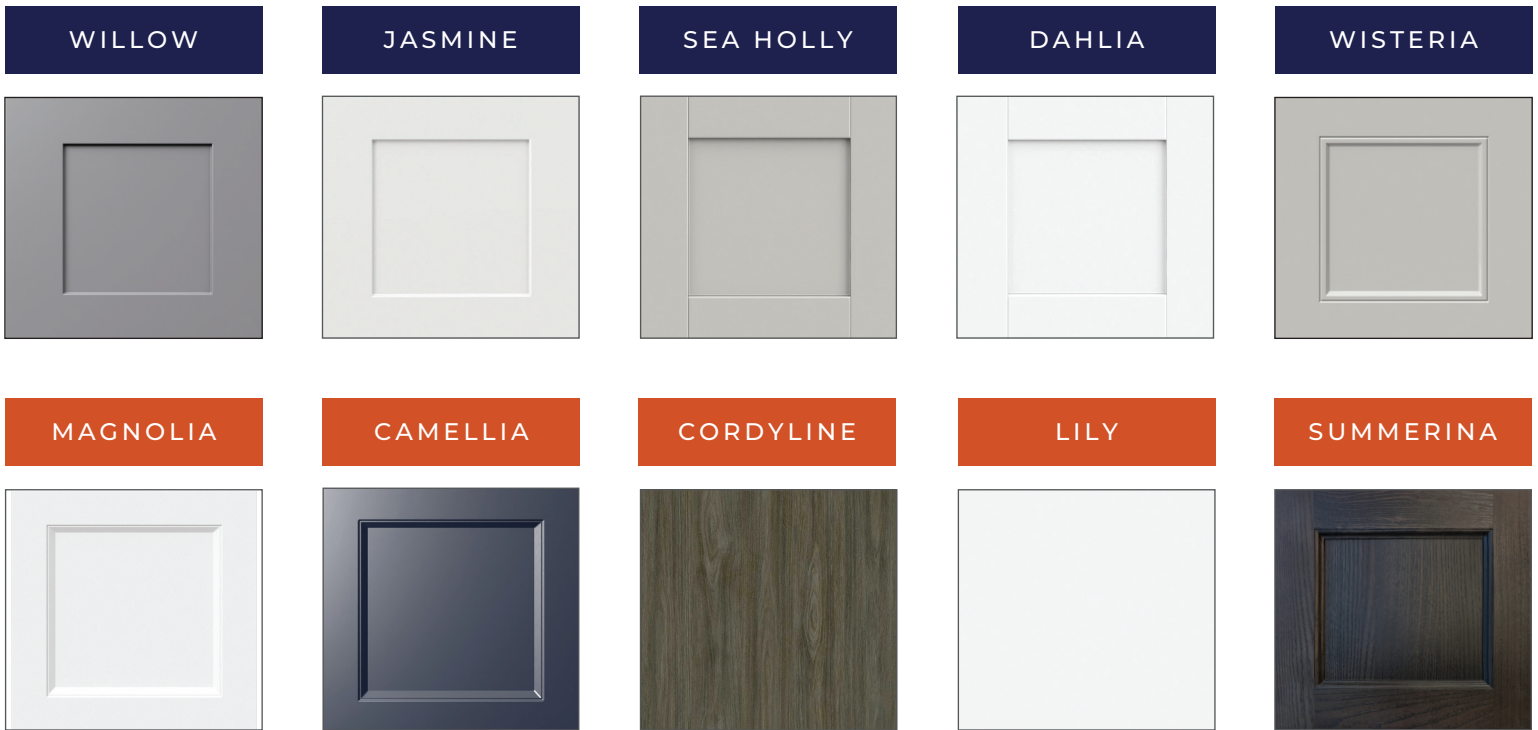
BASE MOLDINGS



FLOATING SHELVES

DOORS & DRAWER FRONTS

Here are our door styles at a glance. Each style comes in a wide choice of door and drawer sizes, available separately so you can create your ideal layout.



All door styles will require cover panels on the exposed areas of the cabinets, except for Lily, Dahlia, and Magnolia.

DOOR FRONTS (W X D X H)

13 1/2 x 3/4 x 10"	12 x 3/4 x 25"	9 x 3/4 x 35"
15 x 3/4 x 10"	13 1/2 x 3/4 x 25"	12 x 3/4 x 35"
16 1/2 x 3/4 x 10"	15 x 3/4 x 25"	13 1/8 x 3/4 x 35"
18 x 3/4 x 10"	16 1/2 x 3/4 x 25"	13 1/2 x 3/4 x 35"
13 1/2 x 3/4 x 15"	18 x 3/4 x 25"	15 x 3/4 x 35"
15 x 3/4 x 15"	21 x 3/4 x 25"	16 1/2 x 3/4 x 35"
16 1/2 x 3/4 x 15"	24 x 3/4 x 25"	18 x 3/4 x 35"
18 x 3/4 x 15"	9 x 3/4 x 30"	21 x 3/4 x 35"
12 x 3/4 x 20"	11 x 3/4 x 30"	24 x 3/4 x 35"
13 1/2 x 3/4 x 20"	12 x 3/4 x 30"	
15 x 3/4 x 20"	13 1/8 x 3/4 x 30"	
16 1/2 x 3/4 x 20"	13 1/2 x 3/4 x 30"	
18 x 3/4 x 20"	15 x 3/4 x 30"	
21 x 3/4 x 20"	16 1/2 x 3/4 x 30"	
24 x 3/4 x 20"	18 x 3/4 x 30"	
	21 x 3/4 x 30"	
	24 x 3/4 x 30"	

DRAWER FRONTS (W X D X H)

12 x 3/4 x 5"	12 x 3/4 x 15"
15 x 3/4 x 5"	15 x 3/4 x 15"
18 x 3/4 x 5"	18 x 3/4 x 15"
21 x 3/4 x 5"	21 x 3/4 x 15"
24 x 3/4 x 5"	24 x 3/4 x 15"
27 x 3/4 x 5"	27 x 3/4 x 15"
30 x 3/4 x 5"	30 x 3/4 x 15"
33 x 3/4 x 5"	33 x 3/4 x 15"
36 x 3/4 x 5"	36 x 3/4 x 15"
12 x 3/4 x 10"	
15 x 3/4 x 10"	
18 x 3/4 x 10"	
21 x 3/4 x 10"	
24 x 3/4 x 10"	
27 x 3/4 x 10"	
30 x 3/4 x 10"	
33 x 3/4 x 10"	
36 x 3/4 x 10"	

GLASS DOOR FRONTS (W X D X H)

13 1/8 x 3/4 x 30"
13 1/8 x 3/4 x 35"
15 x 3/4 x 30"
15 x 3/4 x 35"
18 x 3/4 x 30"
18 x 3/4 x 35"

All glass doors include clear tempered glass with matching frames*

*Lily glass doors have a Dahlia style frame

*Glass doors are not available for Cordyline

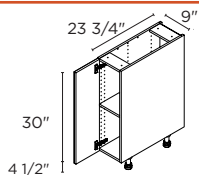
Choose from our extensive collection of base cabinets available in all the shapes and sizes you need.

BASE CABINET OPTIONS

These cabinets are 34 1/2" high (including legs) x 24" deep. Width options are listed with each cabinet.

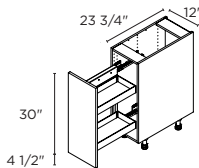
BASE CABINETS >

1 DOOR



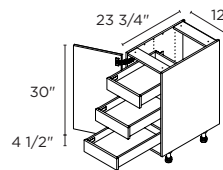
9" | B9FH(L/R)
12" | B12FH(L/R)
15" | B15FH(L/R)
18" | B18FH(L/R)
21" | B21FH(L/R)
24" | B24FH(L/R)

FULL HEIGHT DOOR / PULL OUT SPICE RACK



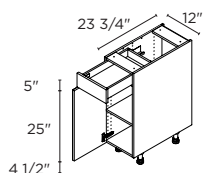
9" | B9FHPOL
9" | B9FHPOR
12" | B12FHPOL
12" | B12FHPOR

1 DOOR / 3 INNER DRAWERS



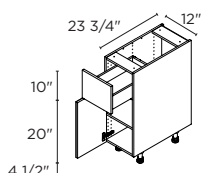
12" | B12FHI3(L/R)
15" | B15FHI3(L/R)
18" | B18FHI3(L/R)
21" | B21FHI3(L/R)
24" | B24FHI3(L/R)

1 DOOR / 1 DRAWER



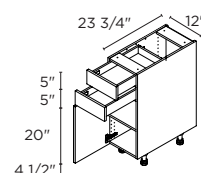
12" | B12(L/R)
15" | B15(L/R)
18" | B18(L/R)
21" | B21(L/R)
24" | B24(L/R)

1 DOOR / 1 DRAWER



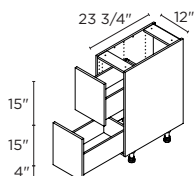
12" | B12A(L/R)
15" | B15A(L/R)
18" | B18A(L/R)
21" | B21A(L/R)
24" | B24A(L/R)

1 DOOR / 2 DRAWERS



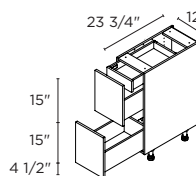
12" | B12B(L/R)
15" | B15B(L/R)
18" | B18B(L/R)
21" | B21B(L/R)
24" | B24B(L/R)

2 DRAWERS



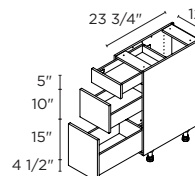
12" | B2D12 27" | B2D27
15" | B2D15 30" | B2D30
18" | B2D18 33" | B2D33
21" | B2D21 36" | B2D36
24" | B2D24

2 DRAWERS / 1 INNER DRAWER



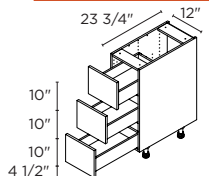
12" | B2D12II 27" | B2D27II
15" | B2D15II 30" | B2D30II
18" | B2D18II 33" | B2D33II
21" | B2D21II 36" | B2D36II
24" | B2D24II

3 DRAWERS



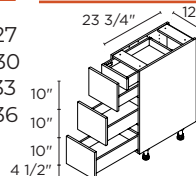
12" | B3D12 27" | B3D27
15" | B3D15 30" | B3D30
18" | B3D18 33" | B3D33
21" | B3D21 36" | B3D36
24" | B3D24

3 DRAWERS



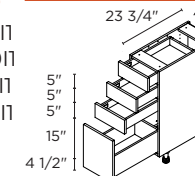
12" | B3DA12 27" | B3DA27
15" | B3DA15 30" | B3DA30
18" | B3DA18 33" | B3DA33
21" | B3DA21 36" | B3DA36
24" | B3DA24

3 DRAWERS / 1 INNER DRAWER



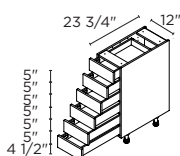
12" | B3DA12II 27" | B3DA27II
15" | B3DA15II 30" | B3DA30II
18" | B3DA18II 33" | B3DA33II
21" | B3DA21II 36" | B3DA36II
24" | B3DA24II

4 DRAWERS



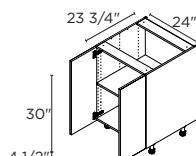
12" | B4D12 27" | B4D27
15" | B4D15 30" | B4D30
18" | B4D18 33" | B4D33
21" | B4D21 36" | B4D36
24" | B4D24

6 DRAWERS



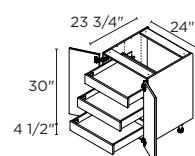
12" | B6D12 27" | B6D27
15" | B6D15 30" | B6D30
18" | B6D18 33" | B6D33
21" | B6D21 36" | B6D36
24" | B6D24

2 DOORS



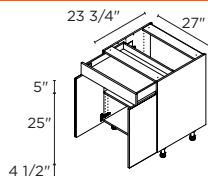
24" | B24-2FH
27" | B27FH
30" | B30FH
33" | B33FH
36" | B36FH

2 DOORS / 3 INNER DRAWERS



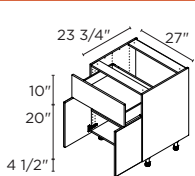
24" | B24-2FHI3
27" | B27FHI3
30" | B30FHI3
33" | FHI3
36" | B36FHI3

2 DOORS / 1 DRAWER



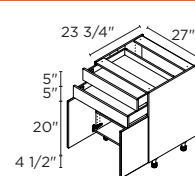
27" | B27
30" | B30
33" | B33
36" | B36

2 DOORS / 1 DRAWER



27" | B27A
30" | B30A
33" | B33A
36" | B36A

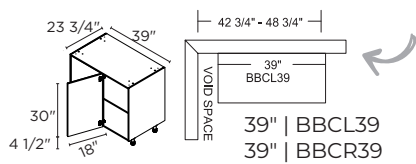
2 DOORS / 2 DRAWERS



27" | B27B
30" | B30B
33" | B33B
36" | B36B

CORNER CABINETS >

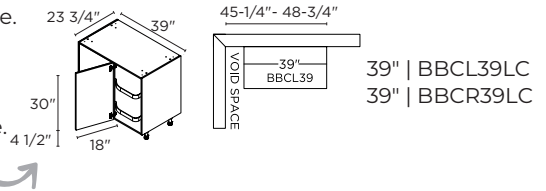
BLIND CORNER WITH SHELF



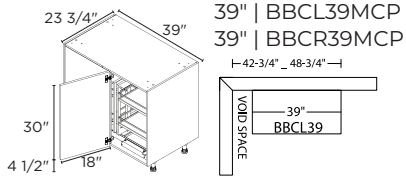
Min. 42 3/4" doesn't allow for filler/hardware clearance.
Max. 48 3/4" is with 6" filler attached to be flush with door (filler not included).

Min. 45 3/4" doesn't allow for filler/hardware clearance.
Max. 48 3/4" is with 6" filler attached to be flush with door (filler not included).

BLIND CORNER WITH LEMANS PULL-OUT

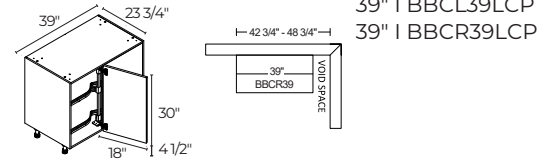


BASE BLIND CORNER WITH MAGICK PULL-OUT

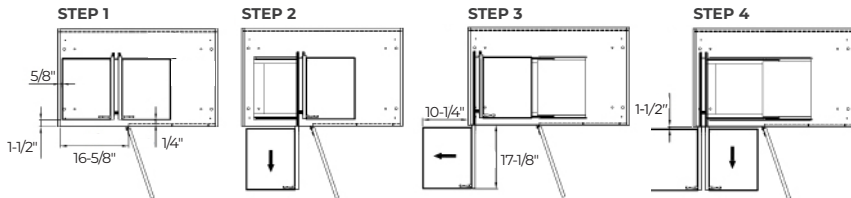


Min. pull 42 3/4" from back wall.
Max. pull 48 3/4" from back wall.
Min. pull does not include hardware clearance.

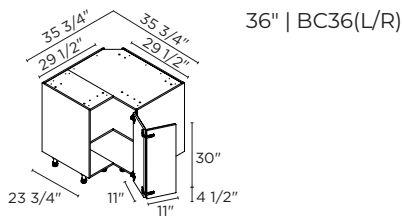
BLIND CORNER WITH PREMIUM LEMANS PULL-OUT



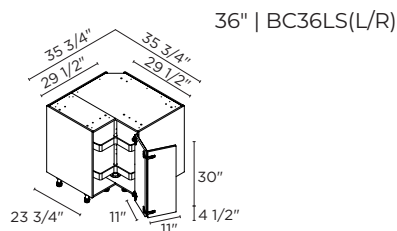
For Magick Corner Pull-Out: left-opening shown below.



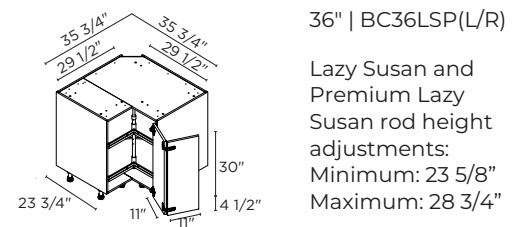
BASE CORNER WITH SHELF



BASE CORNER WITH LAZY SUSAN



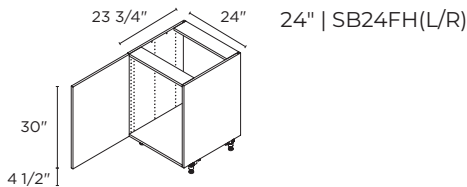
BASE CORNER WITH PREMIUM LAZY SUSAN



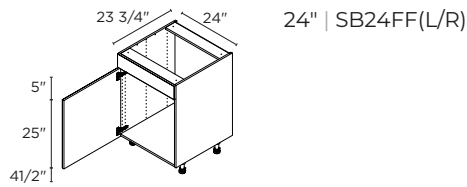
Lazy Susan and Premium Lazy Susan rod height adjustments:
Minimum: 23 5/8"
Maximum: 28 3/4"

SINK CABINETS >

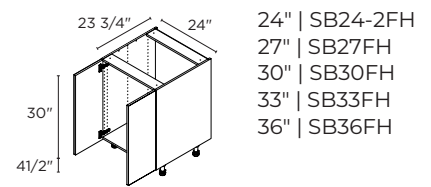
1 DOOR



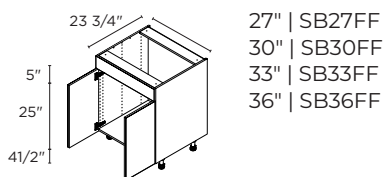
1 DOOR / 1 FIXED FRONT



2 DOORS

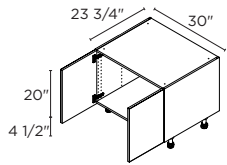


2 DOORS / 1 FIXED FRONT



FARM SINK CABINETS >

2 DOORS

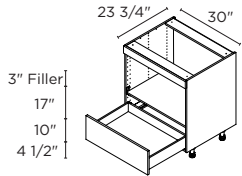


30" | SBAS30
36" | SBAS36

A separate drawer front must be ordered to complete.

MICROWAVE CABINET >

1 DRAWER

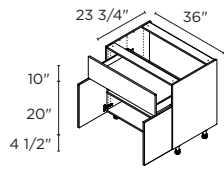


30" | BMW30

Cut-out size:
28 1/2" wide x 17" high.
Filler can be cut to adjust height opening 17" to 20".

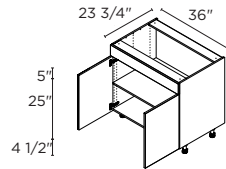
COOKTOP CABINETS >

2 DOORS / 1 DRAWER



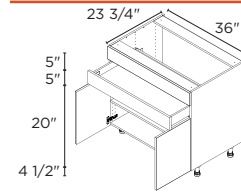
36" | BCT36A

2 DOORS / 1 FIXED FRONT



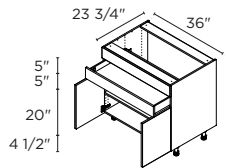
36" | BCT36FF

2 DOORS / 1 DRAWER / 1 FIXED FRONT



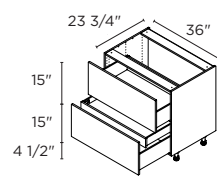
36" | BCT36BFF

2 DOORS / 1 DRAWER / 1 FIXED FRONT



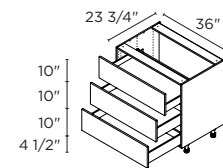
36" | BCT3D36FF

2 DRAWERS / 1 INNER DRAWER



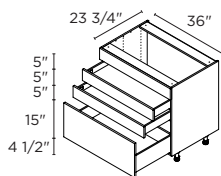
36" | BCT2D36I1

3 DRAWERS



36" | BCT3D36A

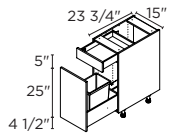
3 DRAWERS / 1 FIXED FRONT



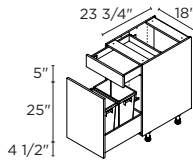
36" | BCT4D36FF

WASTE/RECYCLE CABINETS >

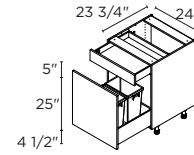
PULL-OUT / 1 DRAWER



15" | BPO15
Comes with 1 bin



18" | BPO18
Comes with 2 bins

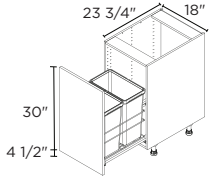


24" | BPO24
Comes with 2 bins

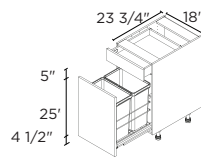
FULL HEIGHT DOOR

PULL-OUT / 1 DRAWER

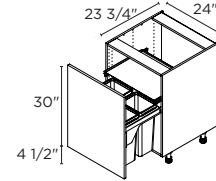
FULL HEIGHT DOOR



18" | B18FHSWB
Comes with 2 bins

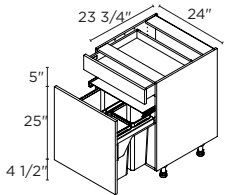


18" | B18SWB
Comes with 2 bins

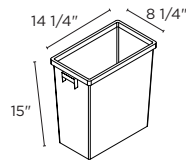


24" | B24FHSWB
Comes with 3 bins

PULL-OUT / 1 DRAWER



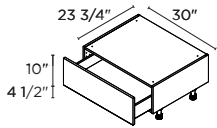
24" | B24SWB
Comes with 3 bins



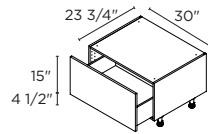
Waste bin dimensions

BASE WINDOW SEAT / BANQUETTE CABINETS >

1 DRAWER



30" | BWS3010
36" | BWS3610
This window seat is 14 1/2" high (including legs) x 24" deep."



30" | BWS3015
36" | BWS3615
This window seat is 19 1/2" high (including legs) x 24" deep."



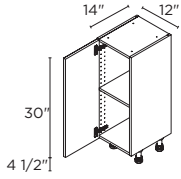
Willow and Lily

SHALLOW BASE CABINET OPTIONS

Choose from our extensive collection of shallow base cabinets available in all the shapes and sizes you need. These cabinets are 34 1/2" high (including legs) x 14" deep. Width options are listed with each cabinet.

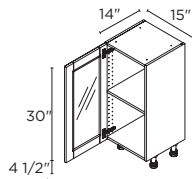
SHALLOW BASE CABINETS >

1 DOOR



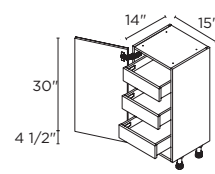
9" | B914FH(L/R)
 12" | B1214FH(L/R)
 15" | B1514FH(L/R)
 18" | B1814FH(L/R)
 21" | B2114FH(L/R)
 24" | B2414FH(L/R)

1 GLASS DOOR*



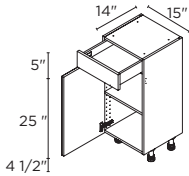
15" | BG1514FH(L/R)
 18" | BG1814FH(L/R)

1 DOOR / 3 INNER DRAWERS



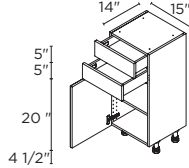
15" | B1514FHI3(L/R)
 18" | B1814FHI3(L/R)
 24" | B2414FHI3(L/R)

1 DOOR / 1 DRAWER



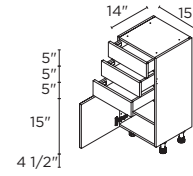
15" | B1514(L/R)
 18" | B1814(L/R)
 24" | B2414(L/R)

1 DOOR / 2 DRAWERS



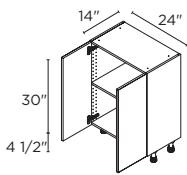
15" | B1514B(L/R)
 18" | B1814B(L/R)
 24" | B2414B(L/R)

1 DOOR / 3 DRAWERS



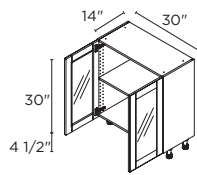
15" | B1514C(L/R)
 18" | B1814C(L/R)

2 DOORS



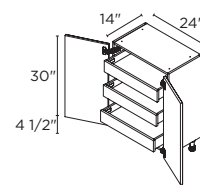
24" | B2414-2FH
 27" | B2714FH
 30" | B3014FH
 33" | B3314FH
 36" | B3614FH

2 GLASS DOORS*



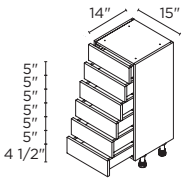
30" | BG3014FH
 36" | BG3614FH

2 DOORS / 3 INNER DRAWERS



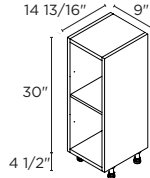
24" | B2414-2FHI3

6 DRAWERS



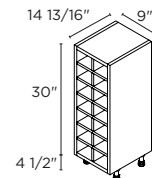
15" | B6D1514
 18" | B6D1814
 24" | B6D2414

BASE OPEN SHELF



9" | BOS930

BASE WINE RACK



9" | BWC930

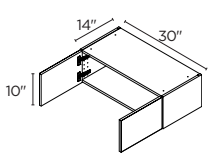
*Glass shelves can be purchased separately.

WALL CABINET OPTIONS

Our wall and glass door wall cabinets are 14" deep while our deep and corner wall cabinets are 24" deep. Height and width options are listed with each cabinet.

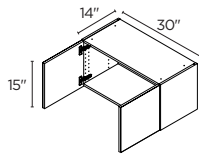
WALL CABINETS >

10" HIGH 2 DOORS



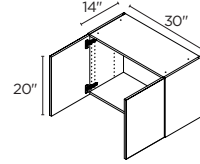
27" | W2710
30" | W3010
33" | W3310
36" | W3610

15" HIGH 2 DOORS



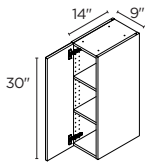
27" | W2715
30" | W3015
33" | W3315
36" | W3615

20" HIGH 2 DOORS



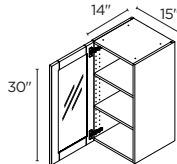
24" | W2420-2
27" | W2720
30" | W3020
33" | W3320
36" | W3620

30" HIGH 1 DOOR



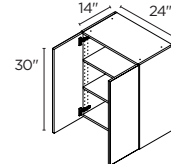
9" | W930(L/R)
12" | W1230(L/R)
15" | W1530(L/R)
18" | W1830(L/R)
21" | W2130(L/R)
24" | W2430(L/R)

30" HIGH 1 GLASS DOOR*



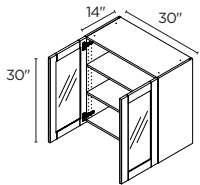
15" | WG1530(L/R)
18" | WG1830(L/R)

30" HIGH 2 DOORS



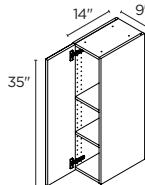
24" | W2430-2
27" | W2730
30" | W3030
33" | W3330
36" | W3630

30" HIGH 2 GLASS DOORS*



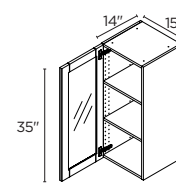
30" | WG3030
36" | WG3630

35" HIGH 1 DOOR



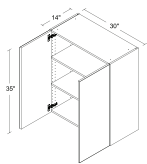
9" | W935(L/R)
12" | W1235(L/R)
15" | W1535(L/R)
18" | W1835(L/R)
21" | W2135(L/R)
24" | W2435(L/R)

35" HIGH 1 GLASS DOOR*



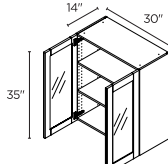
15" | WG1535(L/R)
18" | WG1835(L/R)

35" HIGH 2 DOORS



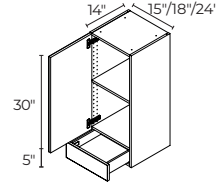
24" | W2435-2
27" | W2735
30" | W3035
33" | W3335
36" | W3635

35" HIGH 2 GLASS DOORS*



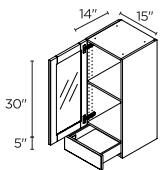
30" | WG3035
36" | WG3635

35" HIGH 1 DOOR / 1 DRAWER



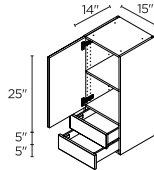
15" | W1535A(L/R)
18" | W1835A(L/R)
24" | W2435A(L/R)

35" HIGH 1 GLASS DOOR* / 1 DRAWER



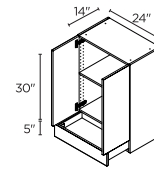
15" | WG1535A(L/R)
18" | WG1835A(L/R)

35" HIGH 1 DOOR / 2 DRAWERS



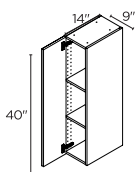
15" | W1535B(L/R)
18" | W1835B(L/R)
24" | W2435B(L/R)

35" HIGH 2 DOORS / 1 DRAWER



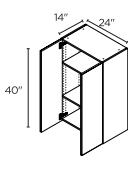
24" | W2435-2A

40" HIGH 1 DOOR



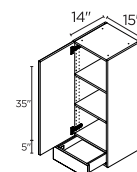
9" | W940(L/R)
12" | W1240(L/R)
15" | W1540(L/R)
18" | W1840(L/R)
21" | W2140(L/R)
24" | W2440(L/R)

40" HIGH 2 DOORS



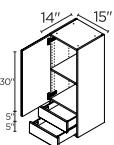
24" | W2440-2
27" | W2740
30" | W3040
33" | W3340
36" | W3640

40" HIGH 1 DOOR / 1 DRAWER



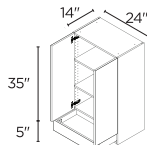
15" | W1540A(L/R)
18" | W1840A(L/R)
24" | W2440A(L/R)

40" HIGH 1 DOOR / 2 DRAWERS



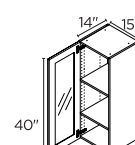
15" | W1540B(L/R)
18" | W1840B(L/R)
24" | W2440B(L/R)

40" HIGH 2 DOORS / 1 DRAWER



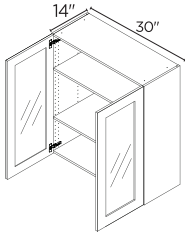
24" | W2440-2A

40" HIGH 1 GLASS DOOR*



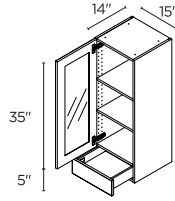
15" | WG1540(L/R)
18" | WG1840(L/R)

40" HIGH 2 GLASS DOORS*



30" | WG3040
36" | WG3640

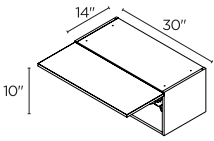
40" HIGH 1 GLASS DOOR* / 1 DRAWER



30" | WG1540A(L/R)
36" | WG1840A(L/R)

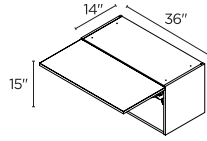
LIFT-UP WALL CABINETS >

10" HIGH 1 LIFT-UP DOOR



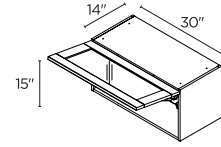
24" | WLU2410
27" | WLU2710
30" | WLU3010
33" | WLU3310
36" | WLU3610

15" HIGH 1 LIFT-UP DOOR



24" | WLU2415
27" | WLU2715
30" | WLU3015
33" | WLU3315
36" | WLU3615

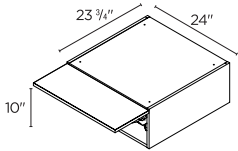
15" HIGH 1 GLASS LIFT-UP DOOR*



30" | WLUG3015

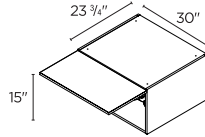
DEEP LIFT-UP WALL CABINETS >

10" HIGH 1 LIFT-UP DOOR



24" | WLU241024
27" | WLU271024
30" | WLU301024
33" | WLU331024
36" | WLU361024

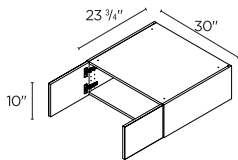
15" HIGH 1 LIFT-UP DOOR



24" | WLU241524
27" | WLU271524
30" | WLU301524
33" | WLU331524
36" | WLU361524

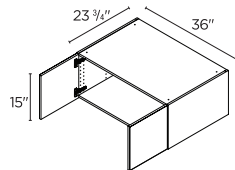
DEEP WALL CABINETS >

10" HIGH 2 DOORS



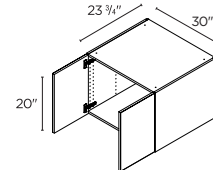
27" | W271024
30" | W301024
33" | W331024
36" | W361024

15" HIGH 2 DOORS



27" | W271524
30" | W301524
33" | W331524
36" | W361524

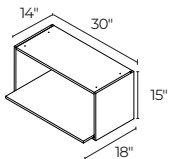
20" HIGH 2 DOORS



24" | W242024-2
27" | W272024
30" | W302024
33" | W332024
36" | W362024

WALL MICROWAVE SHELF >

15" HIGH

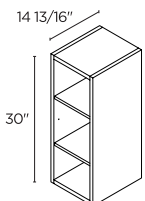


30" | WMS3015

The cabinet features a matching interior. Shelf is removable.

SPECIALTY WALL CABINETS >

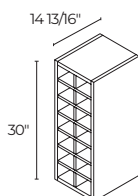
WALL OPEN SHELF



9" | WOS930

Vertical or horizontal installation.

WALL WINE RACK



9" | WWC930

Vertical or horizontal installation.

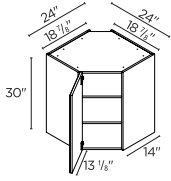
*Glass shelves can be purchased separately.

WALL CABINET OPTIONS

Our wall and glass door wall cabinets are 14" deep while our deep and corner wall cabinets are 24" deep. Height and width options are listed with each cabinet.

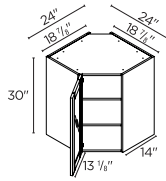
CORNER WALL CABINETS >

30" HIGH 1 DOOR



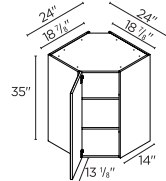
24" | WA2430(L/R)

30" HIGH 1 GLASS DOOR*



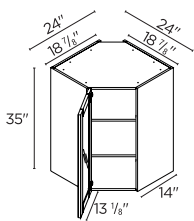
24" | WAG2430(L/R)

35" HIGH 1 DOOR



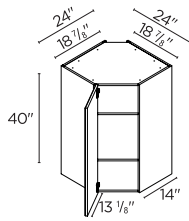
24" | WA2435(L/R)

35" HIGH 1 GLASS DOOR*



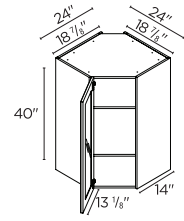
24" | WAG2435(L/R)

40" HIGH 1 DOOR



24" | WA2440(L/R)

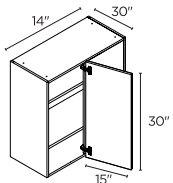
40" HIGH 1 GLASS DOOR*



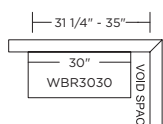
40" | WAG2440(L/R)

BLIND CORNER WALL CABINETS >

30" HIGH 1 DOOR

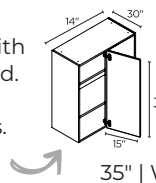


30" | WB3030(L/R)

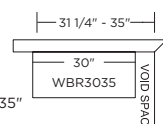


Max. 35" is with 6" filler attached to be flush with door - filler not included. Panel next to door is white for all collections. Filler is required.

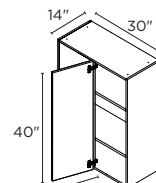
35" HIGH 1 DOOR



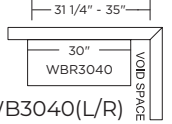
35" | WB3035(L/R)



40" HIGH 1 DOOR



35" | WB3040(L/R)



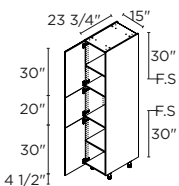
Min. 31 1/4" doesn't allow for filler / hardware clearance. Max. 35" is with a 6" filler attached to be flush with door - filler not included. Right-hand shown in illustrations.

84 1/2" H TALL CABINET OPTIONS

These cabinets are 24" deep x 84 1/2" high. Width options are listed with each cabinet.

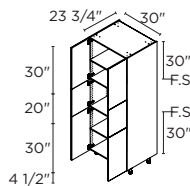
84 1/2" H TALL CABINETS >

3 DOORS



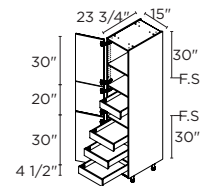
15" | T152484.5(L/R)
18" | T182484.5(L/R)
24" | T242484.5(L/R)

6 DOORS



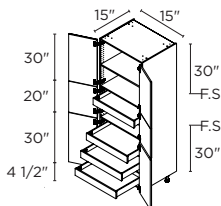
30" | T302484.5

3 DOORS / 4 INNER DRAWERS



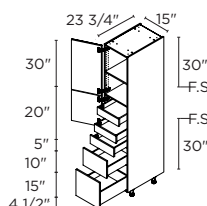
15" | T152484.514(L/R)
18" | T182484.514(L/R)
24" | T242484.514(L/R)

6 DOORS / 4 INNER DRAWERS



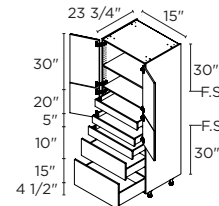
30" | T302484.514

2 DOORS / 3 DRAWERS / 2 INNER DRAWERS



15" | T3D152484.512(L/R)
18" | T3D182484.512(L/R)
24" | T3D242484.512(L/R)

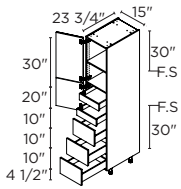
4 DOORS / 3 DRAWERS / 2 INNER DRAWERS



30" | T3D302484.512

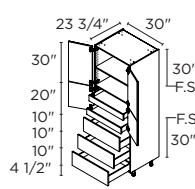
*Glass shelves can be purchased separately.

2 DOORS / 3 DRAWERS /
2 INNER DRAWERS



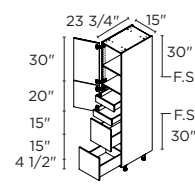
15" | T3DA152484.5I2(L/R)
18" | T3DA182484.5I2(L/R)
24" | T3DA242484.5I2(L/R)

4 DOORS / 3 DRAWERS /
2 INNER DRAWERS



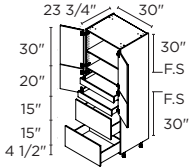
30" | T3DA302484.5I2

2 DOORS / 2 DRAWERS /
2 INNER DRAWERS



15" | T2D152484.5I2(L/R)
18" | T2D182484.5I2(L/R)
24" | T2D242484.5I2(L/R)

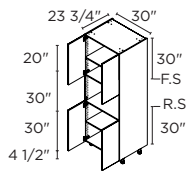
4 DOORS / 2 DRAWERS /
2 INNER DRAWERS



30" | T2D302484.5I2

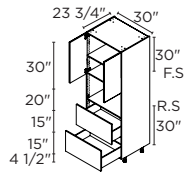
84 1/2" H TALL APPLIANCE CABINETS >

MICROWAVE¹
4 DOORS



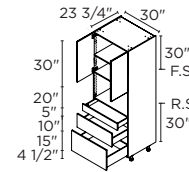
30" | TM3084.5

MICROWAVE¹
2 DOORS / 2 DRAWERS



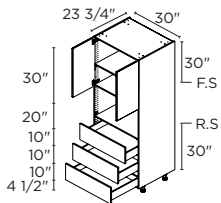
30" | TM2D3084.5

MICROWAVE¹
2 DOORS / 3 DRAWERS



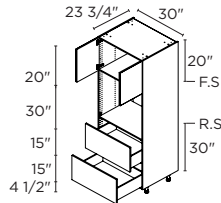
30" | TM3D3084.5

MICROWAVE¹
2 DOORS / 3 DRAWERS



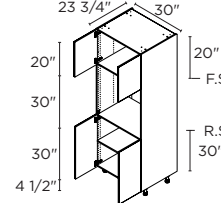
30" | TM3DA3084.5

MICROWAVE¹
2 DOORS / 2 DRAWERS



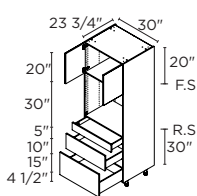
30" | TO2D3084.5

SINGLE OVEN⁴
4 DOORS



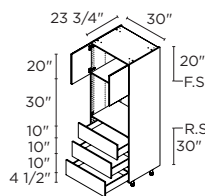
30" | TO3084.5

SINGLE OVEN⁴
2 DOORS / 3 DRAWERS



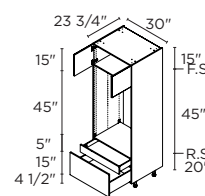
30" | TO3D3084.5

SINGLE OVEN⁴
2 DOORS / 3 DRAWERS



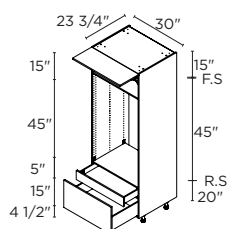
30" | TO3DA3084.5

MICRO/WALL OVEN²
2 DOORS / 2 DRAWERS



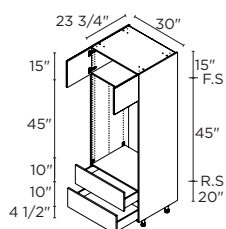
30" | TMO2D3084.5

MICRO/WALL OVEN²
1 LIFT-UP DOOR / 2 DRAWERS



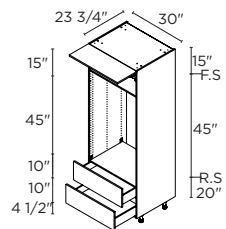
30" | TMOL2D3084.5

MICRO/WALL OVEN²
2 DOORS / 2 DRAWERS



30" | TMO2DA3084.5

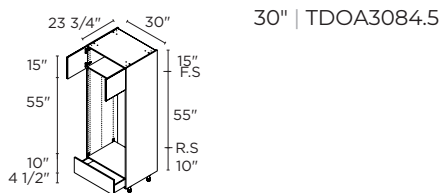
MICRO/WALL OVEN²
1 LIFT-UP DOOR / 2 DRAWERS



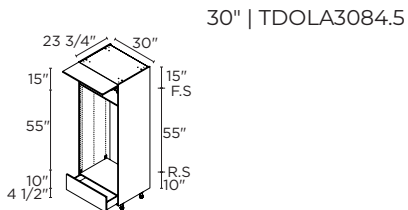
30" | TMOL2DA3084.5

RS = Reinforced Shelf. FS = Fixed Shelf. Appliance cut-out sizes: (use of a filler is required and must be ordered separately):
1 28 1/2" width x 18 1/2" high. 2 28 1/2" width x 43 1/2" high. 3 28 1/2" width x 53 1/2" high. 4 28 1/2" width x 28 1/2" high.

DOUBLE OVEN³
2 DOORS / 1 DRAWER



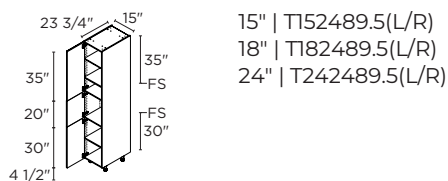
DOUBLE OVEN³
1 LIFT-UP DOOR / 1 DRAWER



89 1/2" H TALL CABINET OPTIONS

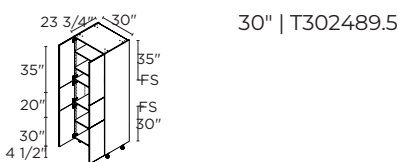
Choose from our extensive collection of tall cabinets available in all the shapes and sizes you need. These cabinets are 24" deep x 89 1/2" high. Width options are listed with each cabinet.

3 DOORS



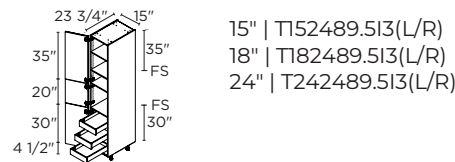
15" | T152489.5(L/R)
18" | T182489.5(L/R)
24" | T242489.5(L/R)

6 DOORS



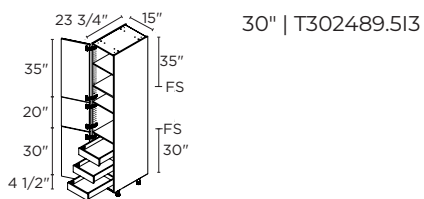
30" | T302489.5

3 DOORS / 3 INNER DRAWERS



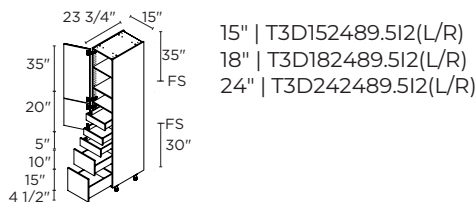
15" | T152489.5I3(L/R)
18" | T182489.5I3(L/R)
24" | T242489.5I3(L/R)

6 DOORS / 3 INNER DRAWERS



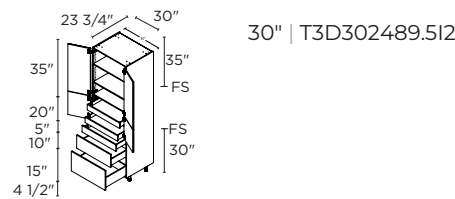
30" | T302489.5I3

2 DOORS / 3 DRAWERS /
2 INNER DRAWERS



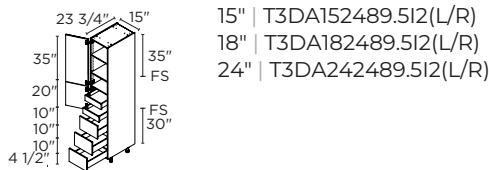
15" | T3D152489.5I2(L/R)
18" | T3D182489.5I2(L/R)
24" | T3D242489.5I2(L/R)

4 DOORS / 3 DRAWERS /
2 INNER DRAWERS



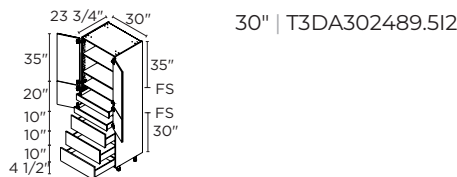
30" | T3D302489.5I2

2 DOORS / 3 DRAWERS /
2 INNER DRAWERS



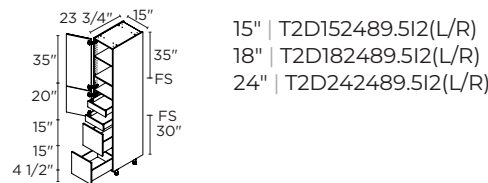
15" | T3DA152489.5I2(L/R)
18" | T3DA182489.5I2(L/R)
24" | T3DA242489.5I2(L/R)

4 DOORS / 3 DRAWERS /
2 INNER DRAWERS



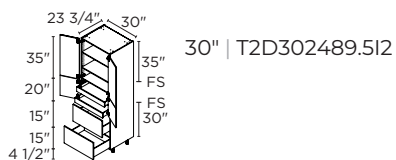
30" | T3DA302489.5I2

2 DOORS / 2 DRAWERS /
2 INNER DRAWERS



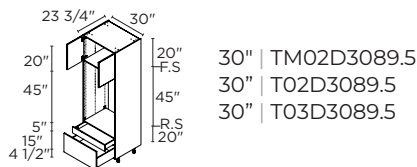
15" | T2D152489.5I2(L/R)
18" | T2D182489.5I2(L/R)
24" | T2D242489.5I2(L/R)

4 DOORS / 2 DRAWERS /
2 INNER DRAWERS



30" | T2D302489.5I2

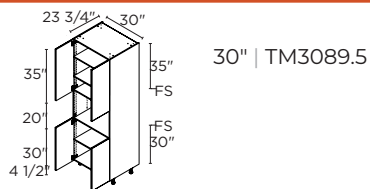
MICRO/WALL OVEN² DOORS/
2 DRAWERS



30" | TM02D3089.5
30" | T02D3089.5
30" | T03D3089.5

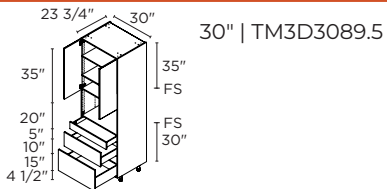
89 1/2" H TALL APPLIANCE CABINETS

MICROWAVE¹ 4 DOORS



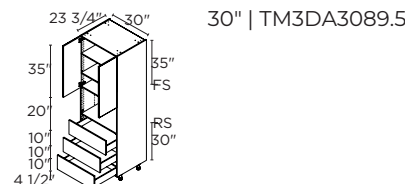
30" | TM3089.5

MICROWAVE¹ 2 DOORS / 3 DRAWERS



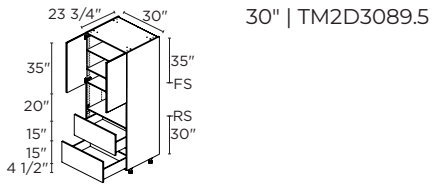
30" | TM3D3089.5

MICROWAVE¹ 2 DOORS / 3 DRAWERS



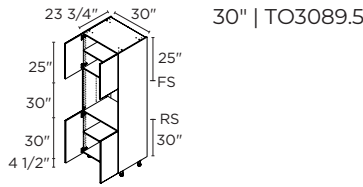
30" | TM3DA3089.5

MICROWAVE ¹ 2 DOORS / 2 DRAWERS



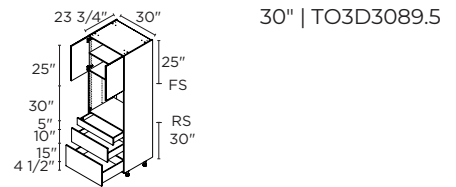
30" | TM2D3089.5

SINGLE OVEN ³ 4 DOORS



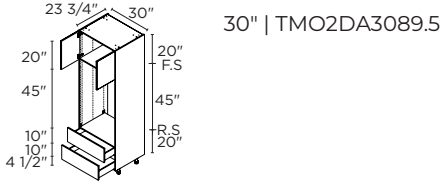
30" | TO3089.5

SINGLE OVEN ³ 2 DOORS / 3 DRAWERS



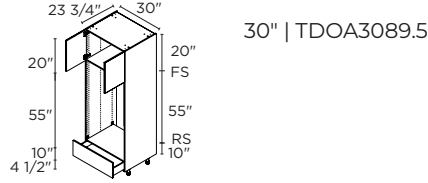
30" | TO3D3089.5

MICRO/WALL OVEN ²
2 DOORS / 2 DRAWERS



30" | TMO2DA3089.5

DOUBLE OVEN ³
2 DOORS / 1 DRAWER

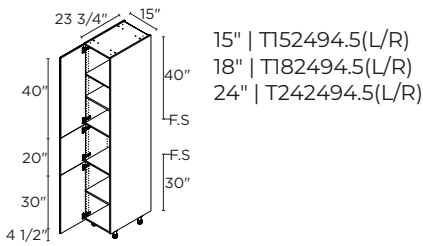


30" | TDOA3089.5

94 1/2" H TALL CABINET OPTIONS

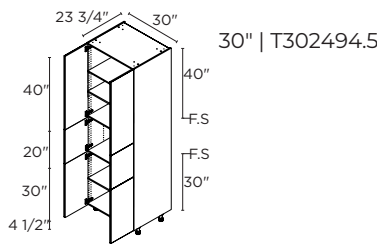
Choose from our extensive collection of tall cabinets available in all the shapes and sizes you need. These cabinets are 24" deep x 94 1/2" high. Width options are listed with each cabinet.

3 DOORS



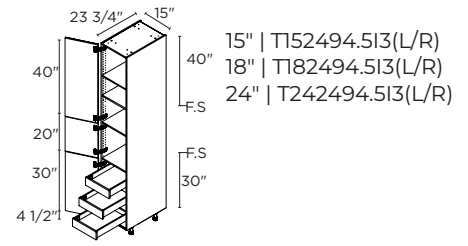
15" | T152494.5(L/R)
18" | T182494.5(L/R)
24" | T242494.5(L/R)

6 DOORS



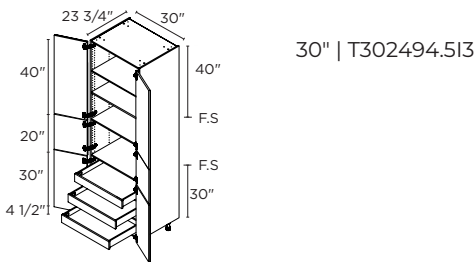
30" | T302494.5

3 DOORS / 3 INNER DRAWERS



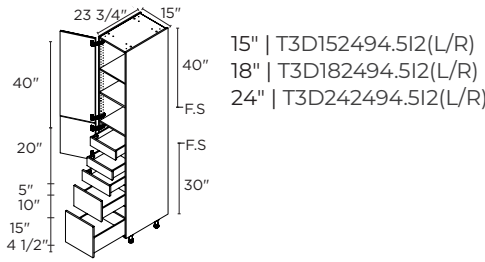
15" | T152494.5I3(L/R)
18" | T182494.5I3(L/R)
24" | T242494.5I3(L/R)

6 DOORS /
3 INNER DRAWERS



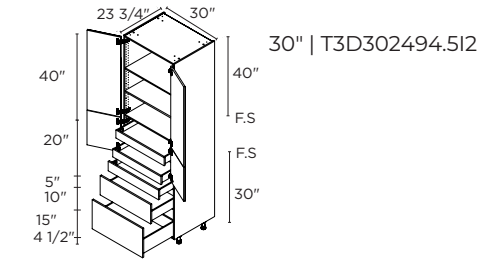
30" | T302494.5I3

2 DOORS / 3 DRAWERS
2 INNER DRAWERS



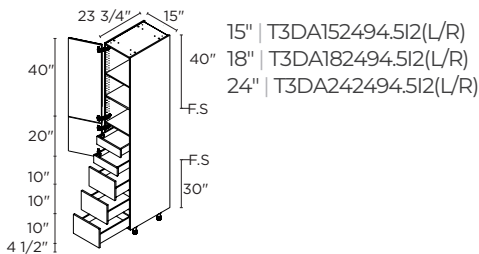
15" | T3D152494.5I2(L/R)
18" | T3D182494.5I2(L/R)
24" | T3D242494.5I2(L/R)

4 DOORS / 3 DRAWERS
2 INNER DRAWERS



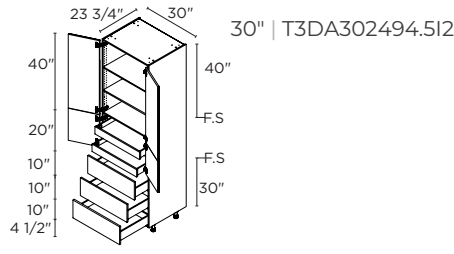
30" | T3D302494.5I2

2 DOORS / 3 DRAWERS
2 INNER DRAWERS



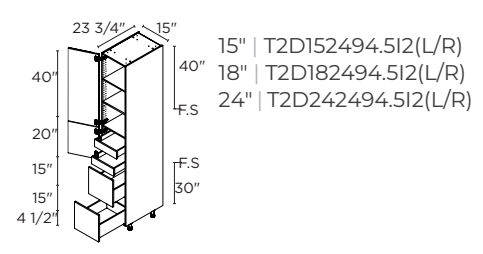
15" | T3DA152494.5I2(L/R)
18" | T3DA182494.5I2(L/R)
24" | T3DA242494.5I2(L/R)

4 DOORS / 3 DRAWERS
2 INNER DRAWERS



30" | T3DA302494.5I2

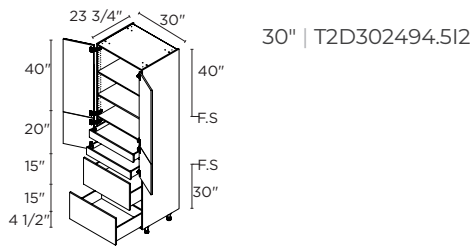
2 DOORS / 2 DRAWERS
2 INNER DRAWERS



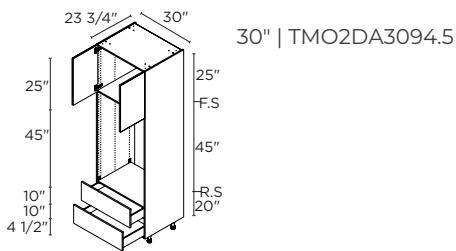
15" | T2D152494.5I2(L/R)
18" | T2D182494.5I2(L/R)
24" | T2D242494.5I2(L/R)

RS = Reinforced Shelf. FS = Fixed Shelf. Appliance cut-out sizes: (use of a filler is required and must be ordered separately):
¹28 1/2" width x 18 1/2" high. ²28 1/2" width x 43 1/2" high. ³28 1/2" width x 53 1/2" high. ⁴28 1/2" width x 28 1/2" high.

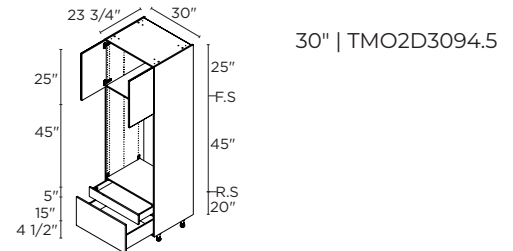
4 DOORS / 2 DRAWERS
2 INNER DRAWERS



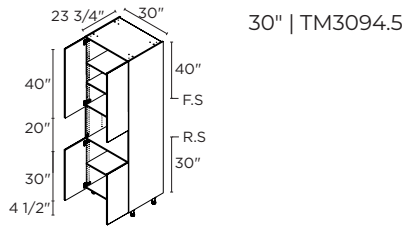
MICRO/WALL OVEN ²
2 DOORS / 2 DRAWERS



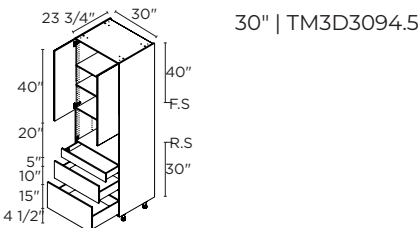
MICRO/WALL OVEN ²
2 DOORS / 2 DRAWERS



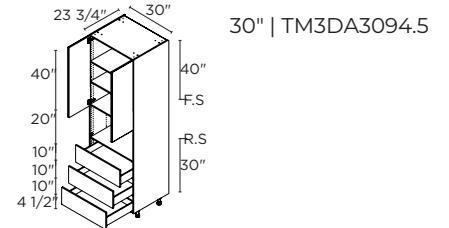
MICROWAVE ¹
4 DOORS



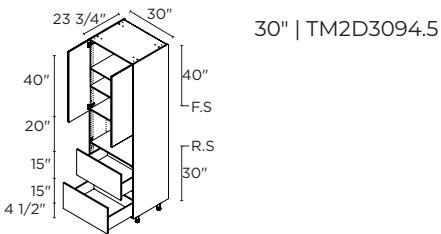
MICROWAVE ¹
2 DOORS / 3 DRAWERS



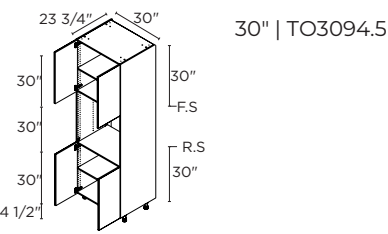
MICROWAVE ¹
2 DOORS / 3 DRAWERS



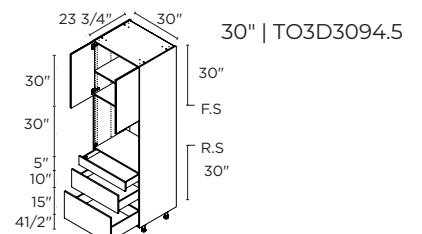
MICROWAVE ¹
2 DOORS / 2 DRAWERS



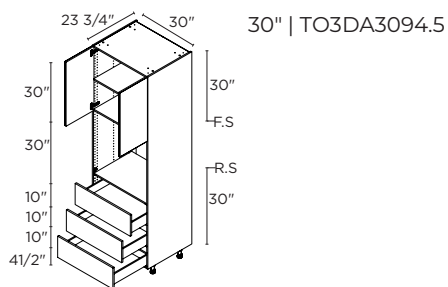
SINGLE OVEN ³
4 DOORS



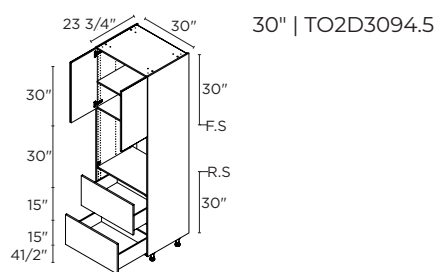
SINGLE OVEN ³
2 DOORS / 3 DRAWERS



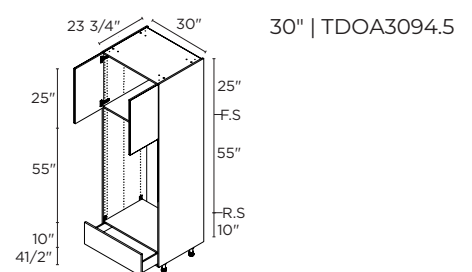
SINGLE OVEN ³
2 DOORS / 3 DRAWERS



SINGLE OVEN ³
2 DOORS / 2 DRAWERS



DOUBLE OVEN ³
2 DOORS / 1 DRAWER



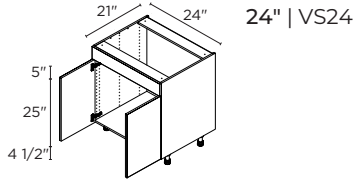
RS = Reinforced Shelf. FS = Fixed Shelf. Appliance cut-out sizes: (use of a filler is required and must be ordered separately):
¹28 1/2" width x 18 1/2" high. ²28 1/2" width x 43 1/2" high. ³28 1/2" width x 53 1/2" high. ⁴28 1/2" width x 28 1/2" high.

VANITY CABINETS

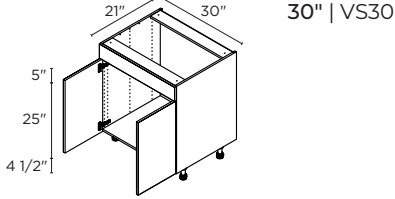
All cabinets are produced with white interiors. Vanity cabinets are not available with solid wood dovetail drawers.

STANDARD VANITIES >

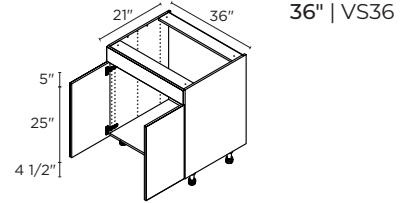
2 DOORS



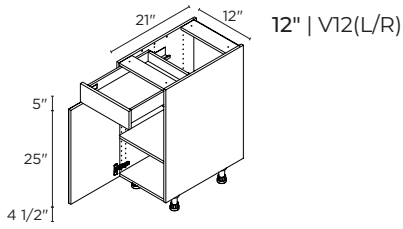
2 DOORS



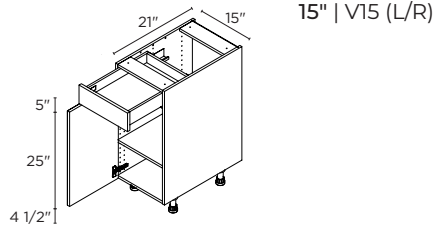
2 DOORS



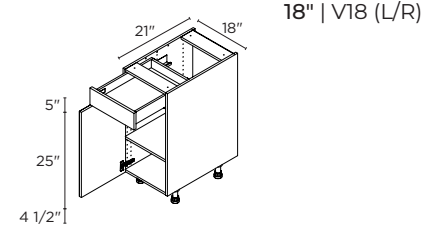
1 DOOR / 1 DRAWER



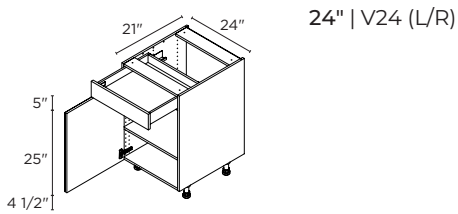
1 DOOR / 1 DRAWER



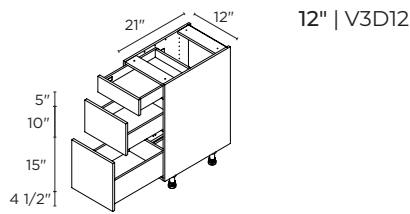
1 DOOR / 1 DRAWER



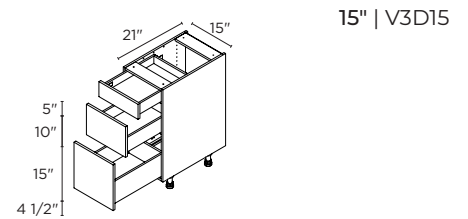
1 DOOR / 1 DRAWER



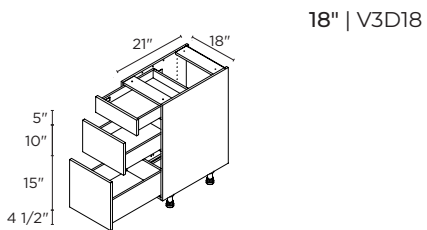
3 DRAWERS



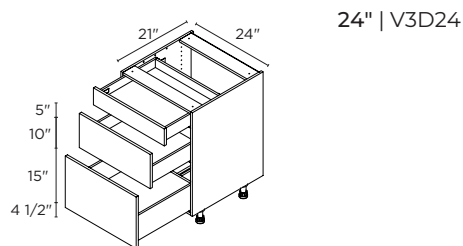
3 DRAWERS



3 DRAWERS



3 DRAWERS

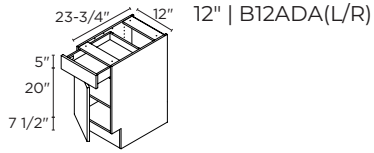


UNIVERSAL CABINETS

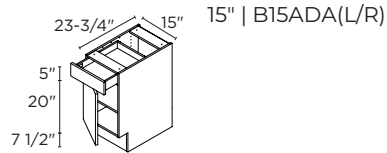
Produced with white interiors.

UNIVERSAL KITCHEN CABINETS >

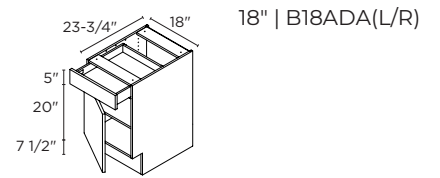
1 DOOR / 1 DRAWER



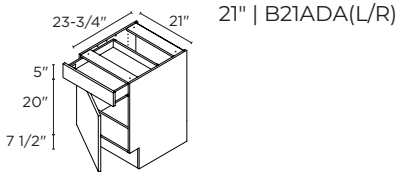
1 DOOR / 1 DRAWER



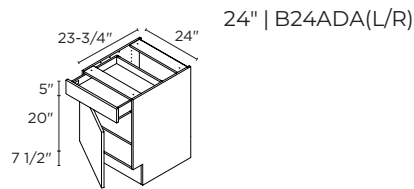
1 DOOR / 1 DRAWER



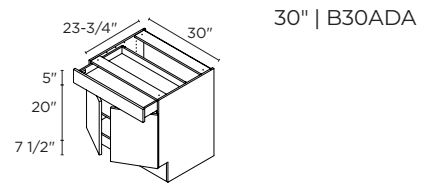
1 DOOR / 1 DRAWER



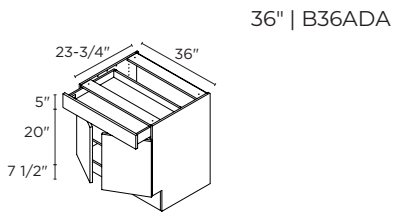
1 DOOR / 1 DRAWER



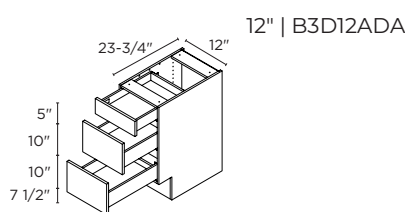
2 DOORS / 1 DRAWER



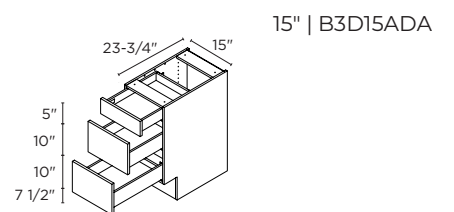
2 DOORS / 1 DRAWER



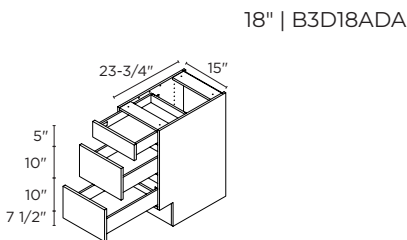
3 DRAWERS



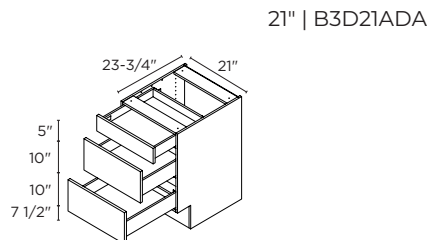
3 DRAWERS



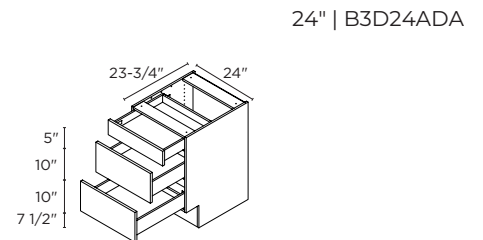
3 DRAWERS



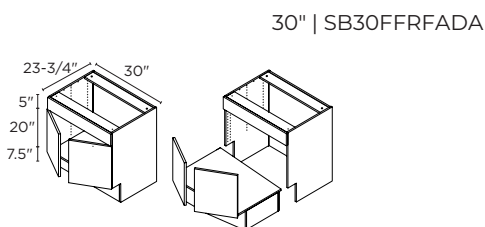
3 DRAWERS



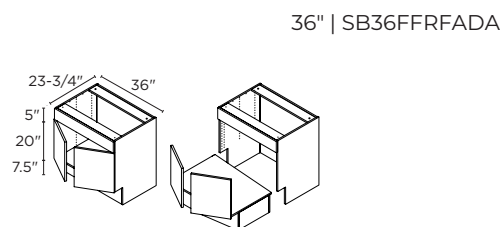
3 DRAWERS



2 DOORS

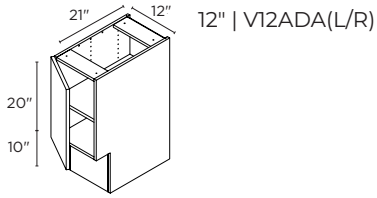


2 DOORS

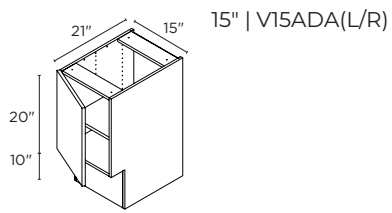


UNIVERSAL VANITY CABINETS >

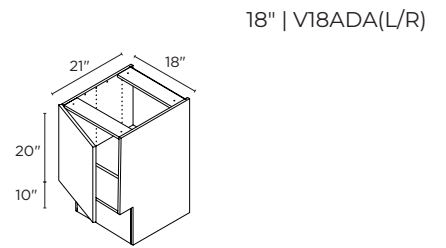
1 DOOR



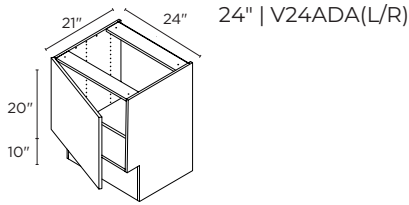
1 DOOR



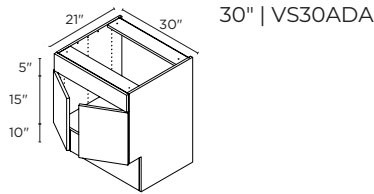
1 DOOR



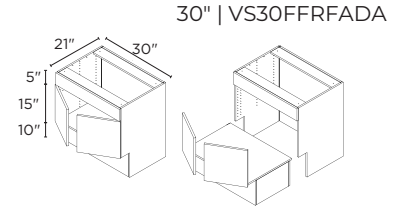
1 DOOR



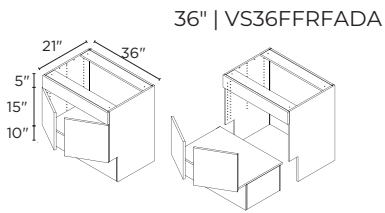
2 DOORS



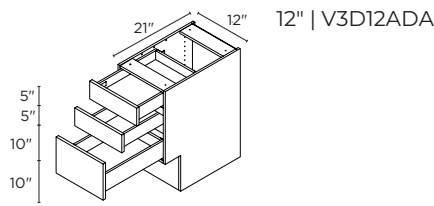
2 DOORS



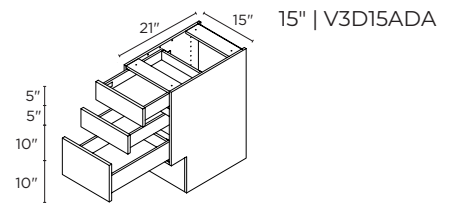
2 DOORS



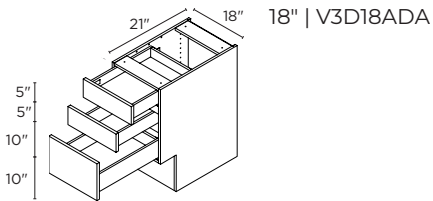
3 DRAWERS



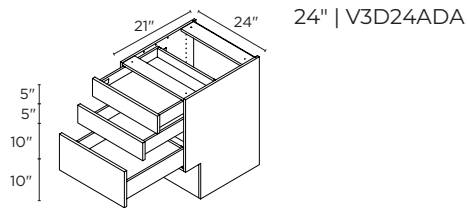
3 DRAWERS



3 DRAWERS



3 DRAWERS



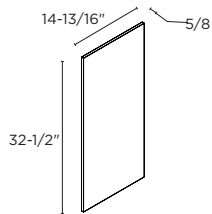
FINISHING TOUCHES: COLOR-MATCHED ACCESSORIES

Add stylish finishing touches to your project with our choice of color-matched panels and trims, all designed to complete your kitchen beautifully. All of our cover panels and fillers are finished on both sides and all 4 edges.

COLOR-MATCHED ACCESSORIES >

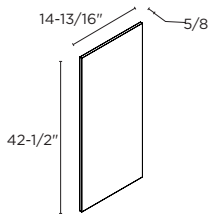
WALL CABINET COVER PANEL 14 13/16"

5/8 x 32 1/2" | CP1432
5/8 x 37 1/2" | CP1437
5/8 x 42 1/2" | CP1442



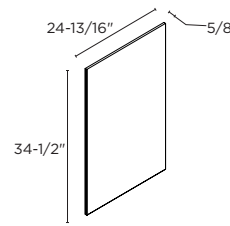
BASE CABINET COVER PANEL 24 13/16"

5/8 x 34 1/2" | CP2434

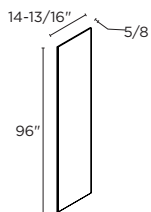


TALL CABINET COVER PANEL 14 13/16"

5/8 x 96" | CP1496

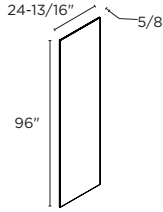


TALL CABINET COVER PANEL 24 13/16"



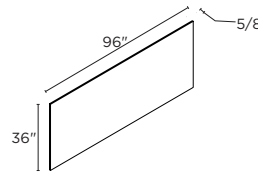
5/8 x 96" | CP2496

TALL CABINET & FRIDGE GABLE COVER PANEL 36"



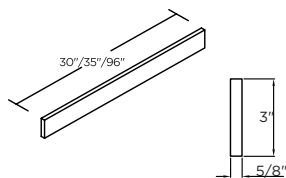
5/8 x 96" | CP3696

ISLAND PANEL 34 1/2"



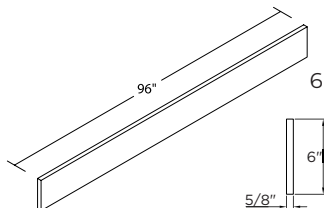
5/8 x 96" | CP3496

FILLER



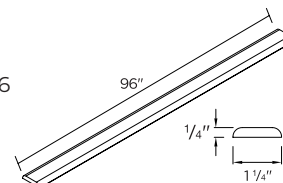
3 x 5/8 x 30" | F330
3 x 5/8 x 35" | F335
3 x 5/8 x 96" | F396

FILLER



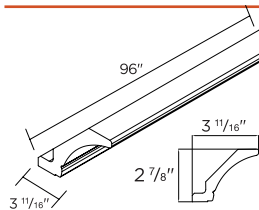
6 x 5/8 x 96" | F696

SCRIBE MOLDING



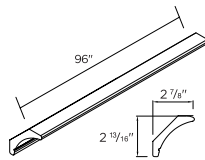
Not available for Cordylite
96 x 1/4 x 1 1/4" | SBM96

COVE CROWN MOLDING



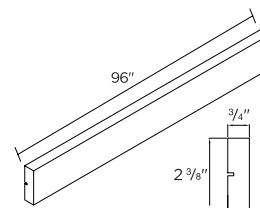
With integrated cleat
Not available for Cordylite
96 x 3 11/16 x 2 7/8" | CCM96C

COVE CROWN MOLDING



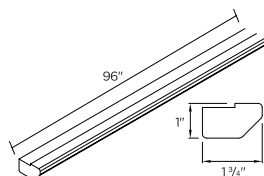
Without cleat
Not available for Cordylite
96 x 2 13/16 x 2 7/8" | CCM96NC

STRAIGHT LIGHT VALANCE MOLDING



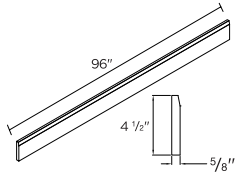
96 x 2 3/8 x 3/4" | SLV96

STRAIGHT LIGHT VALANCE MOLDING



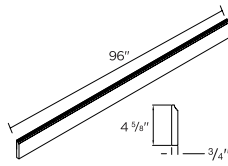
Not available for Cordylite
96 x 1 x 1 3/4" | DLV96

BASE MOLDING



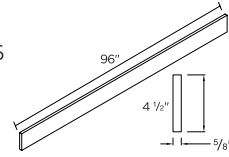
Not available for Cordyline
96 x 5/8 x 4 1/2" | BM96

FURNITURE BASE MOLDING



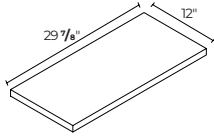
Available for Willow
& Jasmine only
96 x 3/4 x 4 5/8" | FBM96

TOE KICK



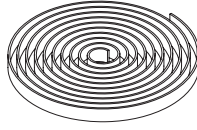
96 x 5/8 x 4 5/8" | TK96

FLOATING SHELF



30 x 12 x 1 1/2" | FS30

EDGE BANDING



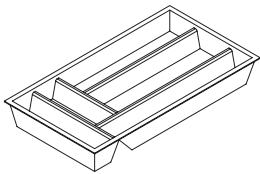
35' roll | ET35

INTERIOR ACCESSORIES & HARDWARE

Created to make everyday use of your kitchen a great experience, our specially-designed interior accessories are made to our exacting MagickHome standards. The MagickHome range includes all the hardware and fittings you need from hinges to toe kick clips.

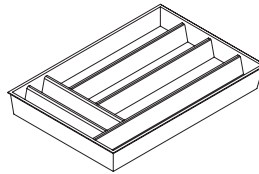
INTERIOR ACCESSORIES >

CUTLERY TRAY FOR 15" DRAWER



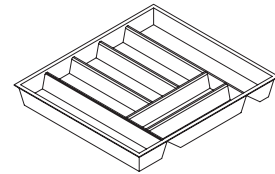
15" | CT15

CUTLERY TRAY FOR 18" DRAWER



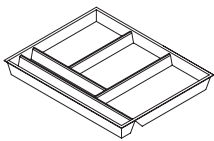
18" | CT18

CUTLERY TRAY FOR 24" DRAWER



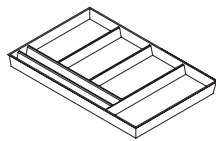
24" | CT24

CUTLERY TRAY FOR 30" DRAWER



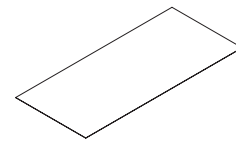
30" | CT30

CUTLERY TRAY FOR 36" DRAWER



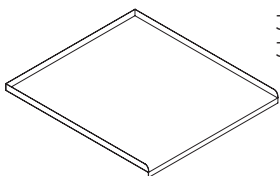
36" | CT36

DRAWER MAT



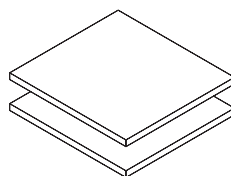
Must be trimmed by
installer
46 x 24" | DM46

UNDER SINK MAT



30 x 24" | SBM30
36 x 24" | SBM36

SHELVING FOR 14" DEEP CABINETS

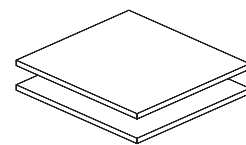


All shelving is 3/4" thick

Cabinet Widths:

9" | SHL-914
12" | SHL-1214
15" | SHL-1514
18" | SHL-1814
21" | SHL-2114
24" | SHL-2414
27" | SHL-2714
30" | SHL-3014
33" | SHL-3314
36" | SHL-3614

SHELVING FOR 24" DEEP CABINETS

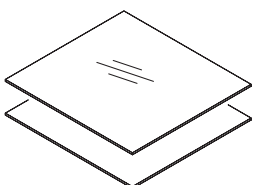


All shelving is 3/4" thick

Cabinet Widths:

9" | SHL-924
12" | SHL-1224
15" | SHL-1524
18" | SHL-1824
21" | SHL-2124
24" | SHL-2424
27" | SHL-2724
30" | SHL-3024
33" | SHL-3324
36" | SHL-3624

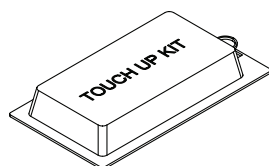
GLASS SHELVING FOR 14" DEEP CABINETS



15" | GSHL-1514
18" | GSHL-1814
30" | GSHL-3014
36" | GSHL-3614

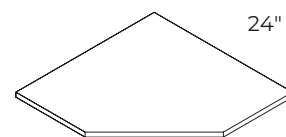
All shelving is 1/4" thick
tempered glass

TOUCH-UP KIT (TUK)



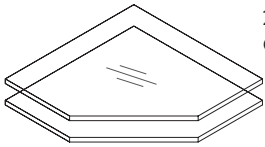
Available per
collection finish.
Kit includes one
marker, one wax
touch-up stick and
one foam pad.

SHELF FOR 24" WALL CORNER



24" | SHL-2424C

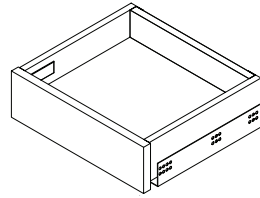
**GLASS SHELVES FOR
24" WALL CORNER**



24" | GSHL-2424C
CORNER - PACK OF 2

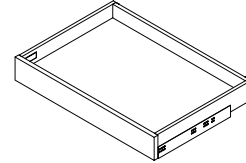
All shelving is 1/4" thick
tempered glass

**SHALLOW INNER DRAWER KIT FOR
14" DEEP CABINETS**



15 x 3 3/8" | DK1514
18 x 3 3/8" | DK1814
24 x 3 3/8" | DK2414

**INNER DRAWER KIT FOR
24" DEEP CABINETS**

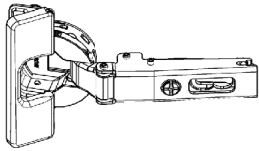


12 x 3 3/8" | DK1224
15 x 3 3/8" | DK1524
18 x 3 3/8" | DK1824
21 x 3 3/8" | DK2124
24 x 3 3/8" | DK2424
27 x 3 3/8" | DK2724
30 x 3 3/8" | DK3024
33 x 3 3/8" | DK3324
36 x 3 3/8" | DK3624

HARDWARE ➤

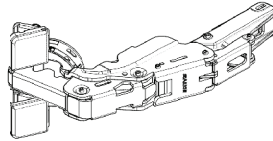
All hinges are available in sets of 2 and include hinge plates.

110 DEGREE HINGE



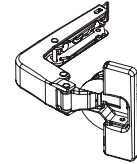
HIN110
Used for standard doors

155 DEGREE HINGE



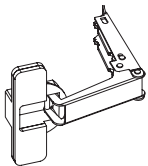
HIN155
Must be used when
adding interior drawers
behind cabinet doors

110 DEGREE BLIND CORNER HINGE



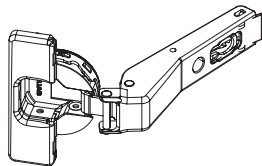
HINBC

PIE CUT HINGE



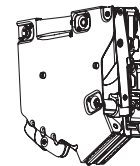
HINPC
Used to connect BC36
door sets together

DIAGONAL CORNER WALL HINGE



HIN45

HORIZONTAL LIFT-UP HINGE



HINLU
Used to create lift-up doors



Lily



CREATE A CUSTOM LOOK

Combining door styles adds a dynamic look to any room, creating visual interest and opening up your décor color palette. Get creative and have fun with your space!



MAGICK HOME

 magickhome.com
 888 860 1120
 support.us@magickhome.com

PROUD MEMBER OF THE
NKBA